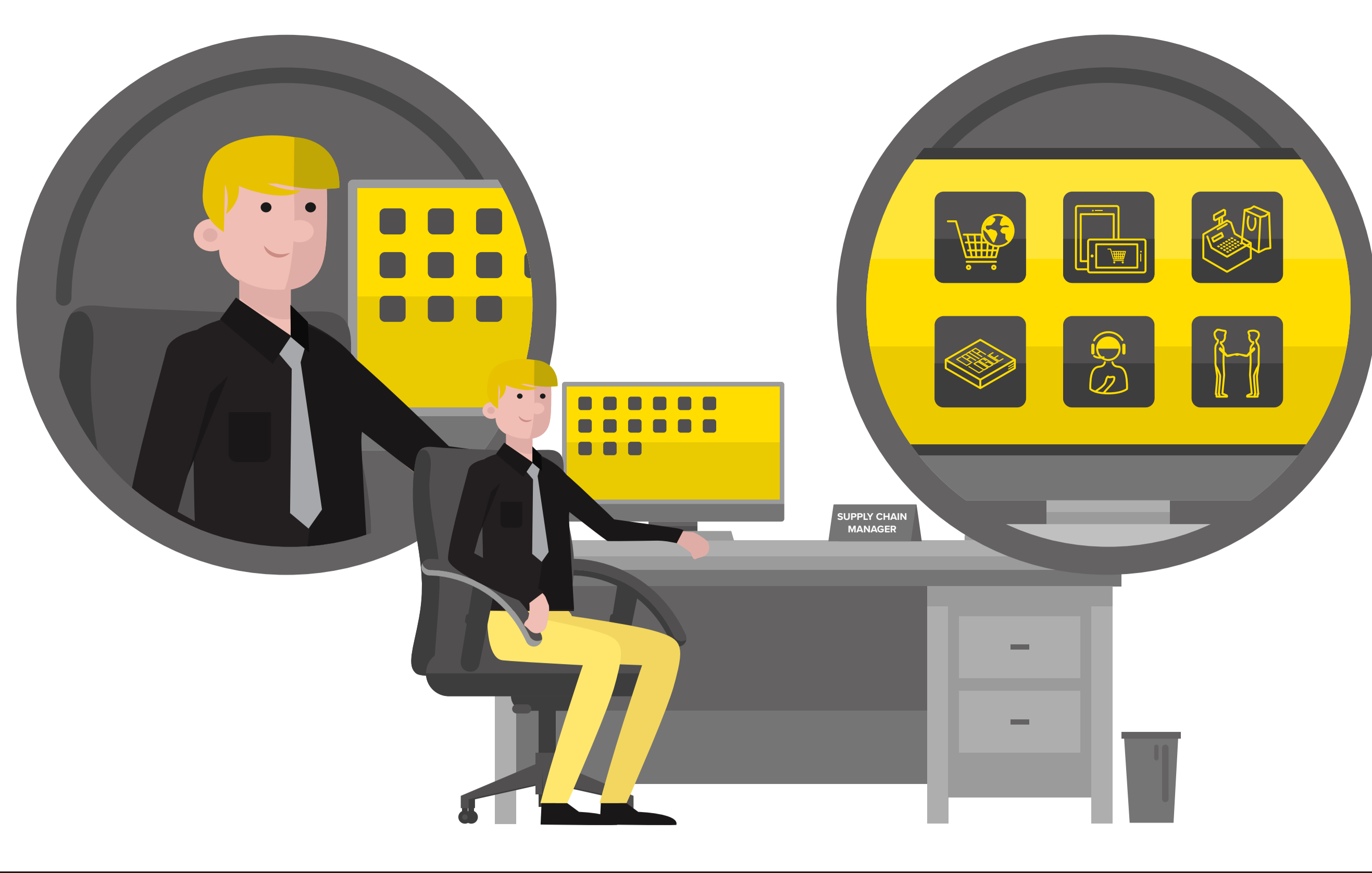
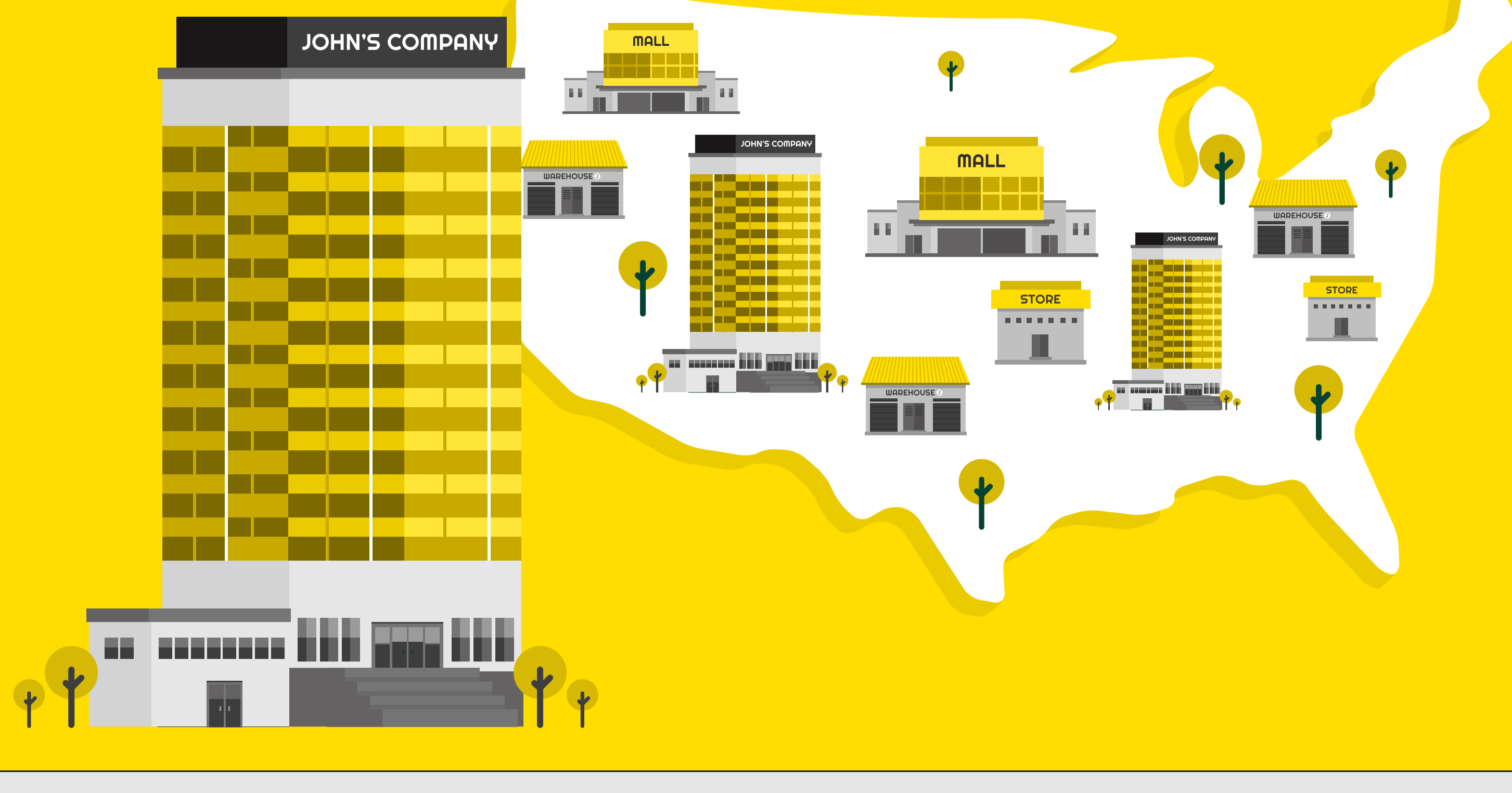


Meet John. He's the supply chain manager for a retailer with multiple sales channels.



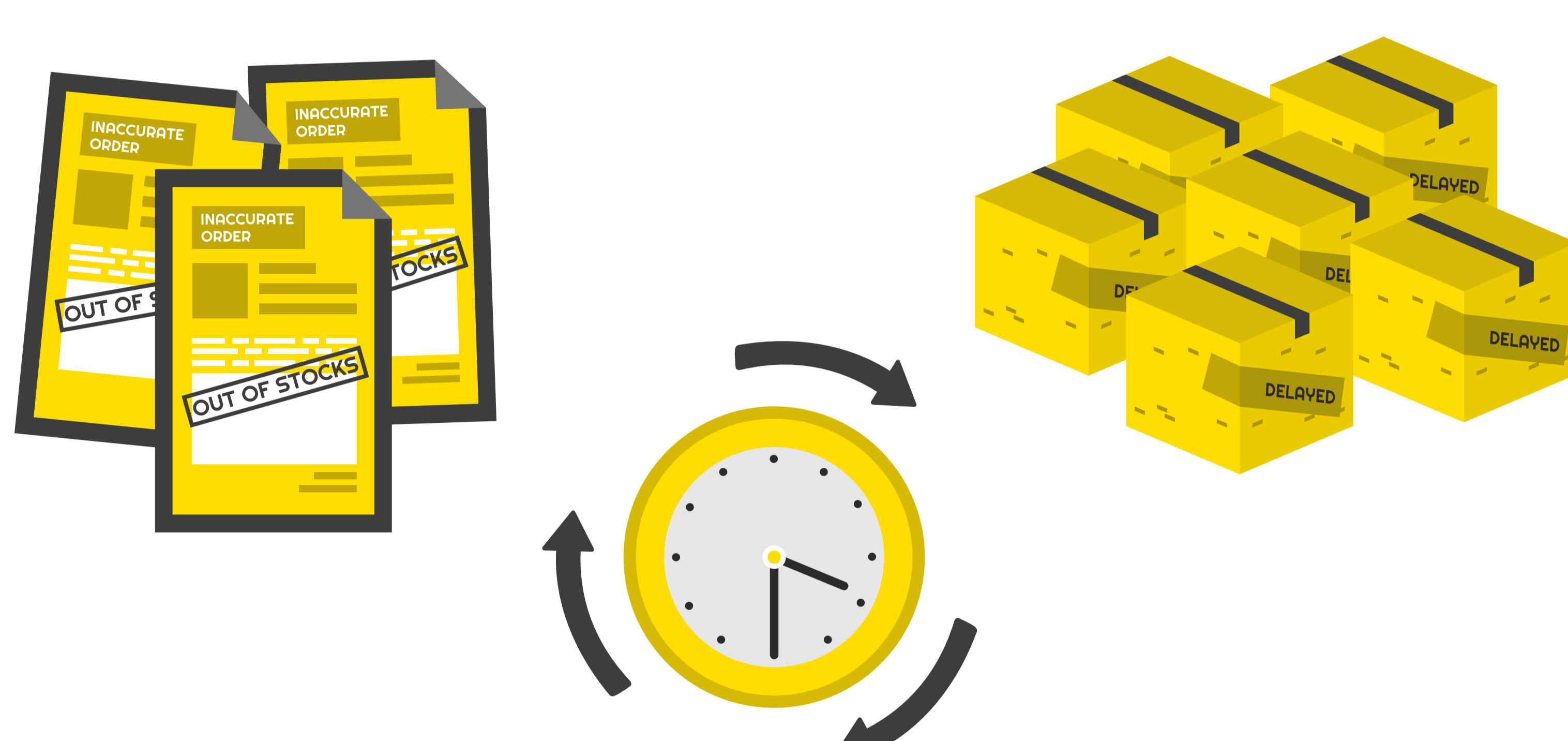
The company is experiencing significant growth and is looking to expand in other markets.



But John has a problem. He can't meet his customers' expectations due to limited visibility of inventory across DC's and the limited ability to collaborate with his suppliers and vendors.



This leads to missing or inaccurate orders, longer order cycle times, and shipping delays,



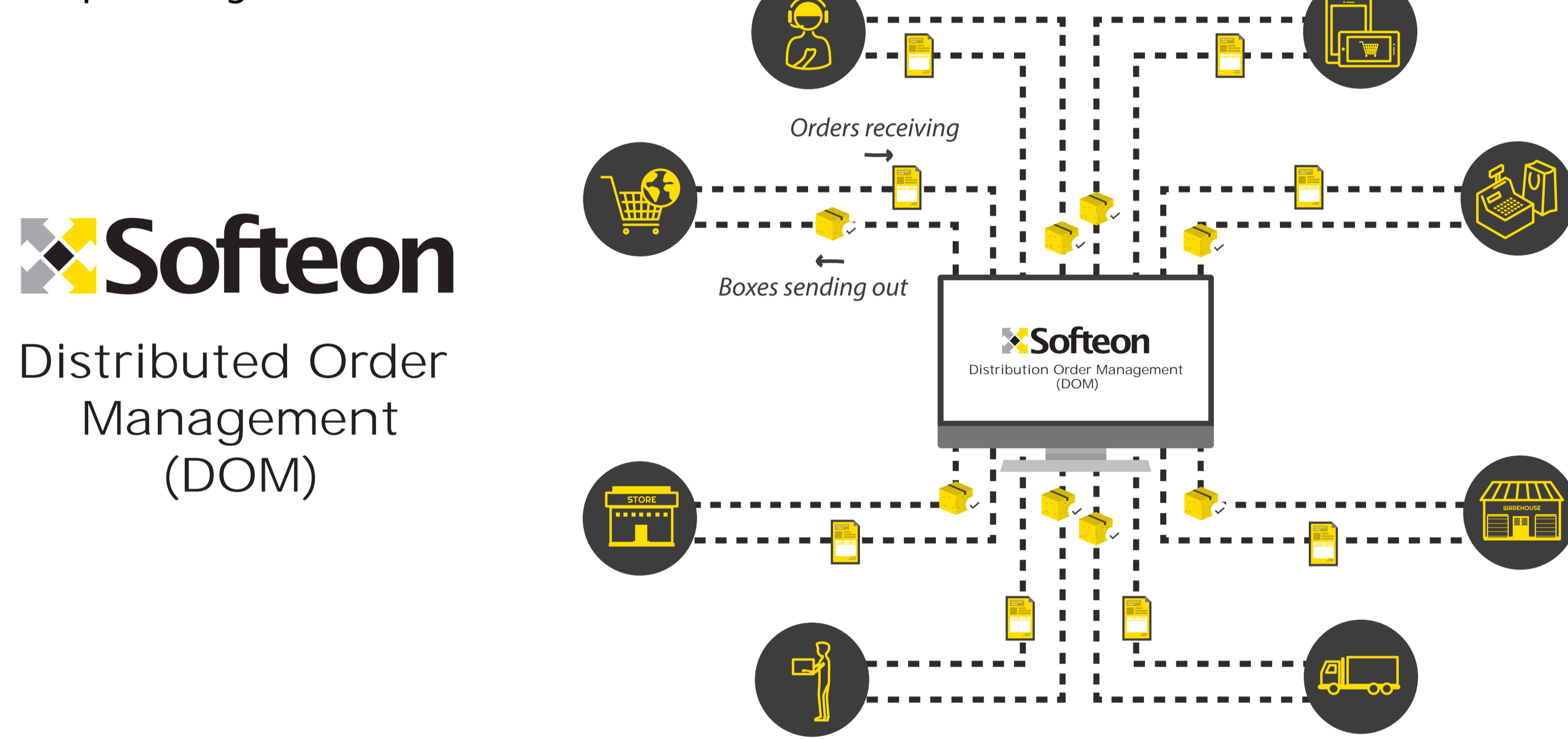
Resulting in unhappy customers



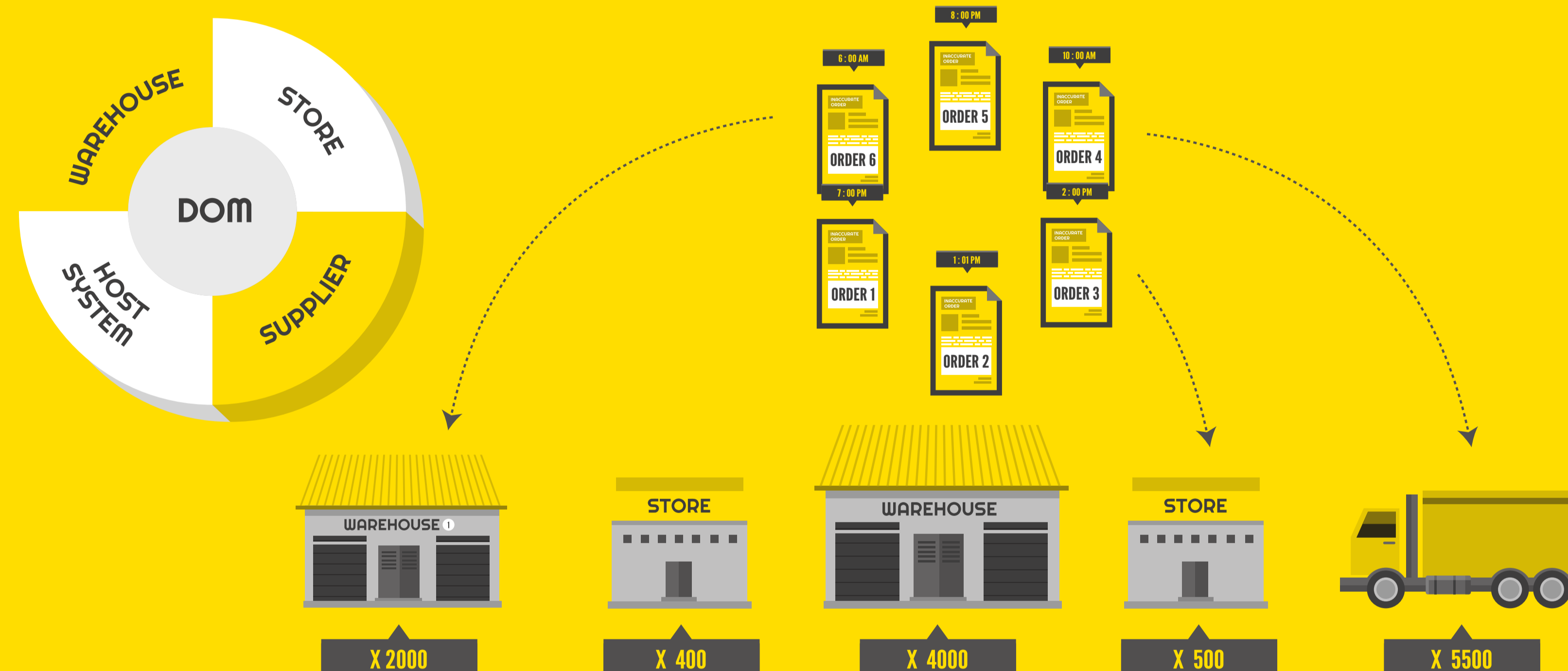
John ends up spending a lot on freight due to the inability to source from the right distribution center.



Fortunately, John found Softeon Distributed Order Management, an adaptable business process engine that accepts and prioritizes orders from multiple sales channels while optimizing multi-channel fulfillment.



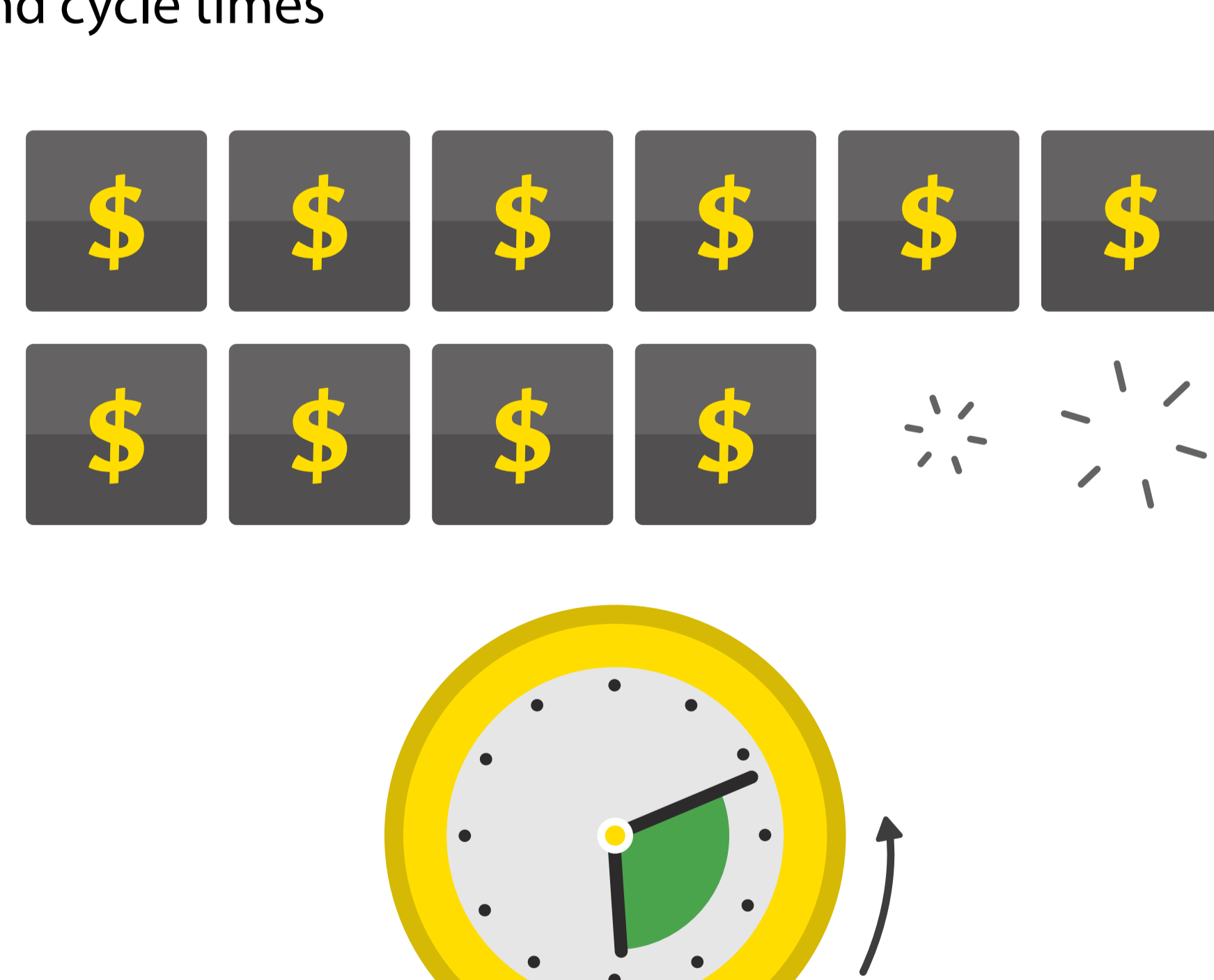
He can easily integrate DOM with his existing warehouse system. It manages all orders in real-time and shows where his inventory is, so he can make complex decisions according to changing demands, faster and easier.



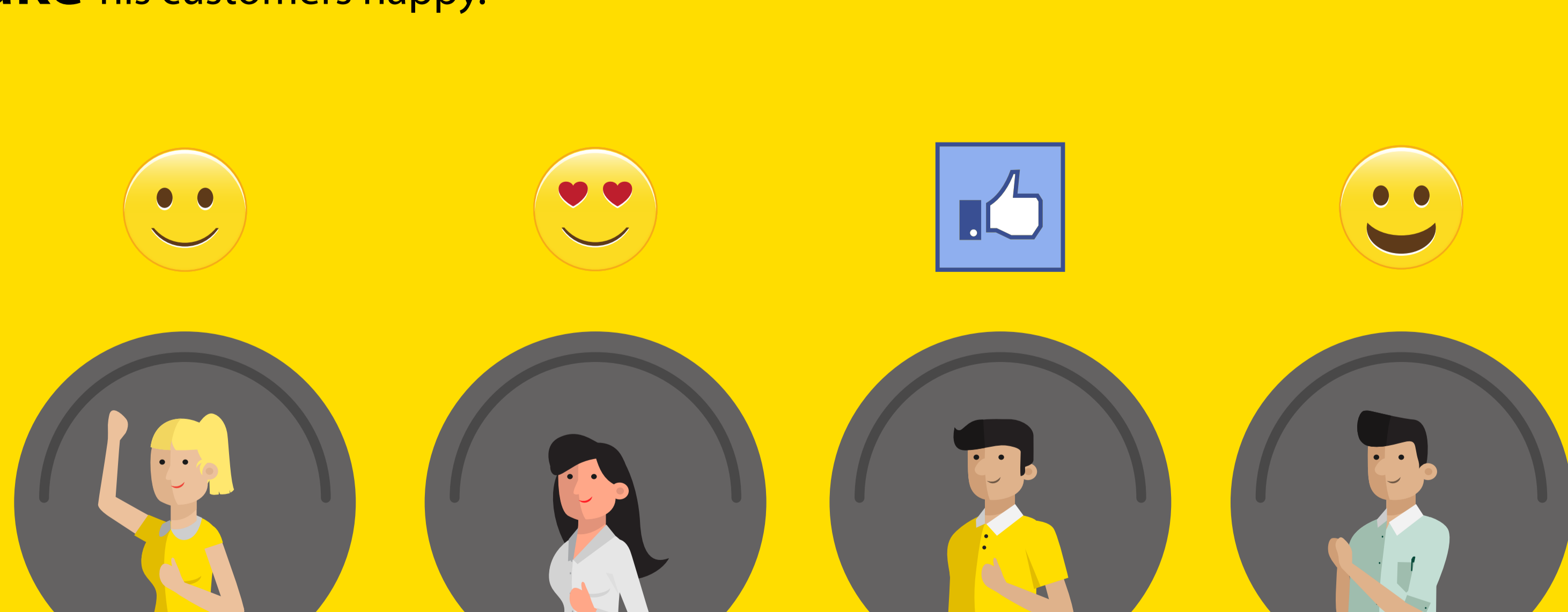
Now, John can finally maintain accurate inventory,



Reduce costs and cycle times



Make his customers happy.



With a more flexible supply chain network, the company is now on its track to expand globally.



Power your multichannel fulfillment with

Softeon DOM

softeon.com 1-855-SOFTEON